

Tubular Handles

Aluminum

SPECIFICATION

Types

- Type **A**: Mounting from the back (threaded blind bore)
- Type **B**: Mounting from the operator's side

Handle tube / End pieces

Aluminum

- Powder coated
Black, RAL 9005, textured finish **SW**
- Anodized, natural color **EL**

Cover

Plastic, Polyamide (PA)
Black, matte finish

Fastening set for type B

Steel, zinc plated

- Socket cap screws ISO 4762-M8x75
- Hex nuts ISO 4032-M8
- Washers DIN 125



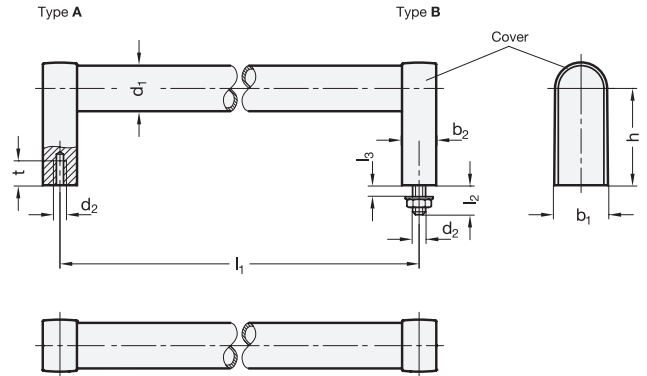
INFORMATION

Tubular handles GN 669 offer the the advantage of high stability due to the connection of handle tube / handle leg.

The screws of type B (mounting from operator's side) are shrouded.

TECHNICAL INFORMATION

- Load Rating Information (see page A35)
- Plastic Characteristics (see page A2)



* Complete with

SW EL

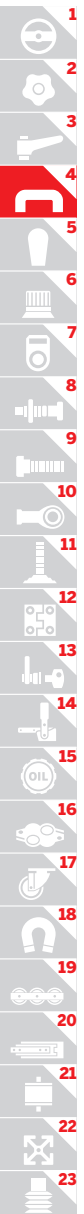
GN 669-A

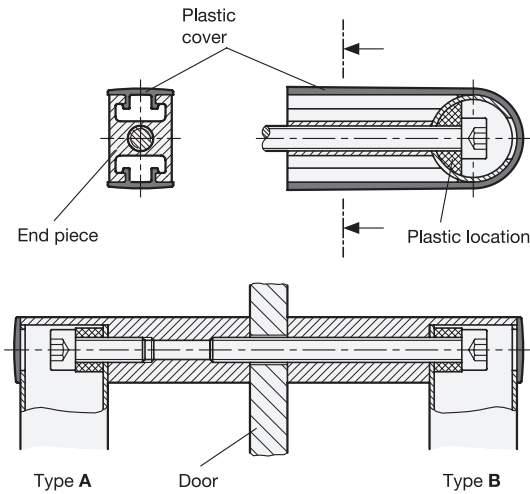
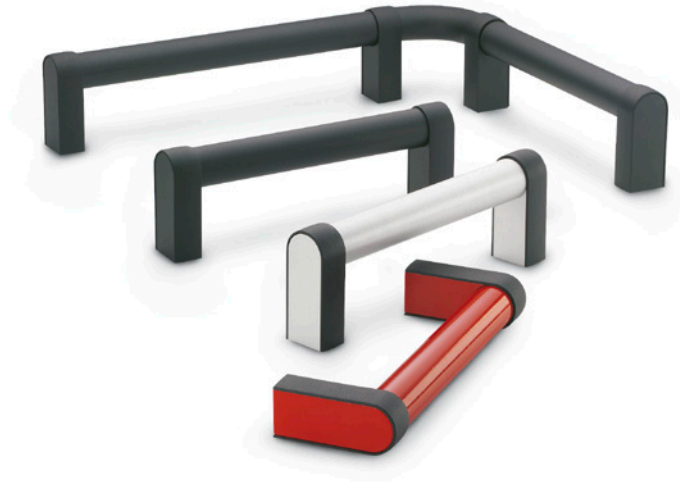
Description	d ₁	l ₁	b ₁	b ₂	d ₂	h ≈	l ₂	l ₃ max.	t min.	⚖
GN 669-28-200-A-*	28	200	32	20	M 8	60	20	11	15	195
GN 669-28-250-A-*	28	250	32	20	M 8	60	20	11	15	210
GN 669-28-300-A-*	28	300	32	20	M 8	60	20	11	15	233
GN 669-28-400-A-*	28	400	32	20	M 8	60	20	11	15	270
GN 669-28-500-A-*	28	500	32	20	M 8	60	20	11	15	290
GN 669-28-600-A-*	28	600	32	20	M 8	60	20	11	15	340

GN 669-B

Description	d ₁	l ₁	b ₁	b ₂	d ₂	h ≈	l ₂	l ₃ max.	t min.	⚖
GN 669-28-200-B-*	28	200	32	20	M 8	60	20	11	15	240
GN 669-28-250-B-*	28	250	32	20	M 8	60	20	11	15	250
GN 669-28-300-B-*	28	300	32	20	M 8	60	20	11	15	315
GN 669-28-400-B-*	28	400	32	20	M 8	60	20	11	15	320
GN 669-28-500-B-*	28	500	32	20	M 8	60	20	11	15	350
GN 669-28-600-B-*	28	600	32	20	M 8	60	20	11	15	440

Weight SW





Mounting as a double handle

Mounting information

When mounting from the operator's side (Type B) the plastic cover is supplied loose. Once the handle has been mounted this cover is pushed over the end of the handle tube and the end piece until it snaps into the end of the groove at the tube end.

Both mounting methods (Type A and B) allow the mounting of a pair of handles in opposite position. This method could be used on doors (double handle). Depending on the door thickness longer socket cap screws ISO 4762 might be required.

